

- I Lampeggiante
- GB Flashing light
- D Blinker
- F Feu clignotant
- E Luz destellante

I
Alimentazione
Assorbimento
Potenza lampada

GB
Power supply
Absorption
Lamp power

D
Versorgung
Stromaufnahme
Leuchtstärke

F
Alimentation
Absorption
Puissance lampe

E
Alimentación
Absorción
Potencia lámpara

12Vdc / 24Vdc / 230Vac
0,8A / 0,4A / 0,1A
15W / 10W / 25W

I
Fig. 1: Componenti
Fig. 2: Collegamenti
Fig. 3: Connessione
antenna

GB
Pic. 1: Components
Pic. 2: Connections
Pic. 3: Antenna
connection

D
Abb. 1: Komponenten
Abb. 2: Anschlüsse
Abb. 3: Antennen-
anschluss

F
Fig. 1: Composants
Fig. 2: Raccordements
Fig. 3: Connexion
antenne

E
Fig. 1: Componentes
Fig. 2: Conexiones
Fig. 3: Conexión
antena

Fig. 1

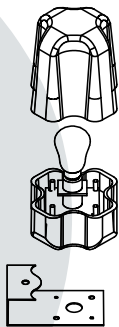


Fig. 2

230V – 12/24V

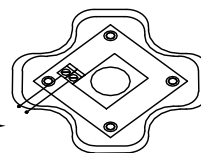
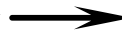
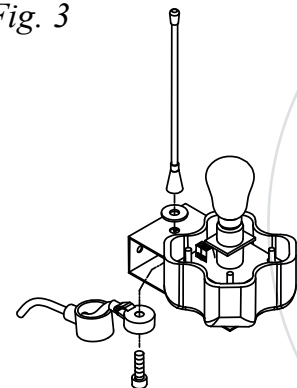


Fig. 3



Delton

1095 Budapest, Mester u. 34.

Tel.: *218-5542, 215-9771, 215-7550,
216-7017, 216-7018 Fax: 218-5542

Mobil: 30 940-1970, 20 949-2688

1141 Budapest, Fogarasi út 77.

Tel.: *220-7940, 220-7814, 220-7959,
220-8881, 364-3428 Fax: 220-7940

Mobil: 30 531-5454, 30 939-9989

E-mail: delton@delton.hu Web: www.delton.hu

www.kaputnyitunk.hu

*The Manufacturer can technically improve
the quality of its products without
any prior notice.*

*Il Fabbricante può apportare ai suoi prodotti
modifiche tecniche, migliorative*